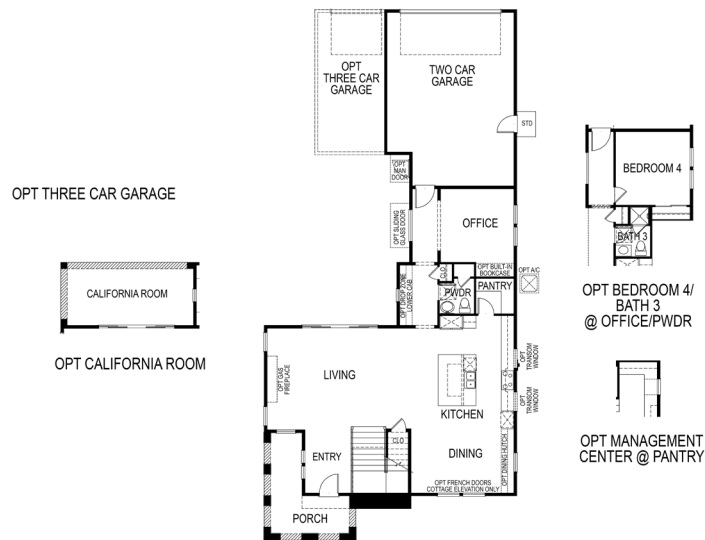


# LAYIA

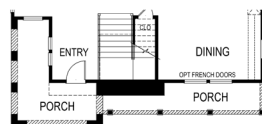
Wathen Castanos Homes

## Plan 3 - Maddison

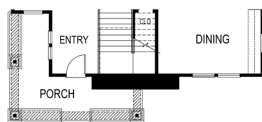
- 2,359 APPROX. SQ. FT.
- 3-4 BEDROOMS
- 2.5-3 BATHROOMS
- TWO STORY



SPANISH - D

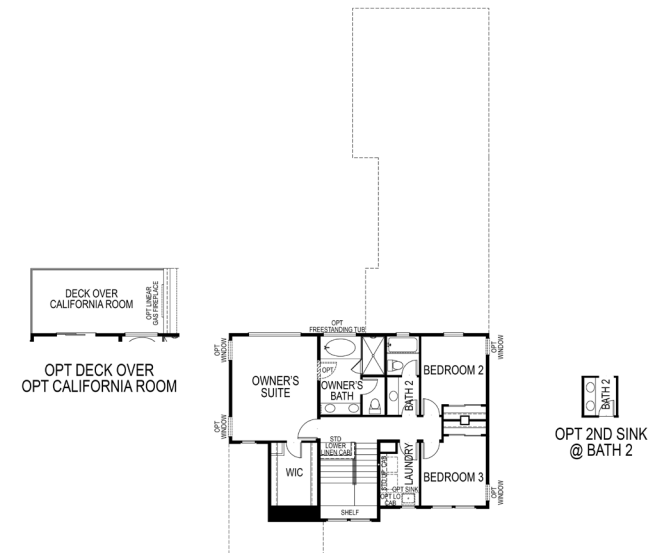


COTTAGE - A

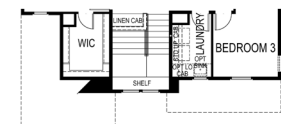


CRAFTSMAN - B

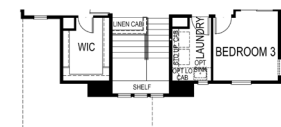
LEVEL 1



SPANISH - D



COTTAGE - A



CRAFTSMAN - B

LEVEL 2

## SEA HAVEN



All community information, including prices, is not guaranteed and remains subject to change, availability or delay without notice. Any community improvements and recreational features and amenities described are based upon current development plans, which are subject to change and under no obligation to be completed. Maps and plans are not to scale, are not intended to show specific detailing and all dimensions are approximate. Prices may not include lot premiums, upgrades and options. Community Association or other fees may be required. Photos are for illustration only and do not necessarily represent actual community. No Purchase Agreement may be negotiated or signed by a prospective buyer for the purchase of a home until the Community's applicable Conditional or Final Public Report has been issued by the Bureau of Real Estate (CalBRE). Cypress Marina Heights, LLC. Wathen Castanos Peterson Homes, Inc. CalBRE #01955018. ©Jan, 2018, All rights reserved. Visit LiveSeaHaven.com to see full list of terms and conditions.

